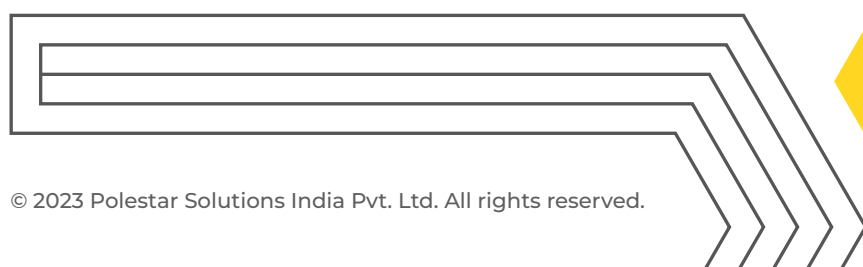
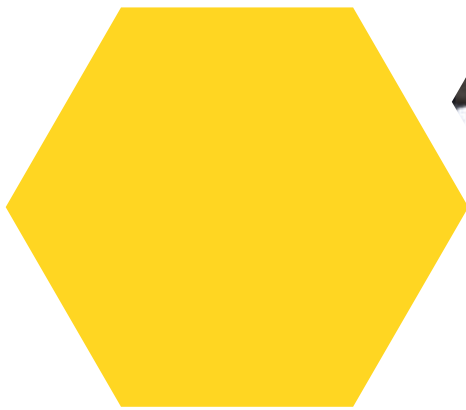
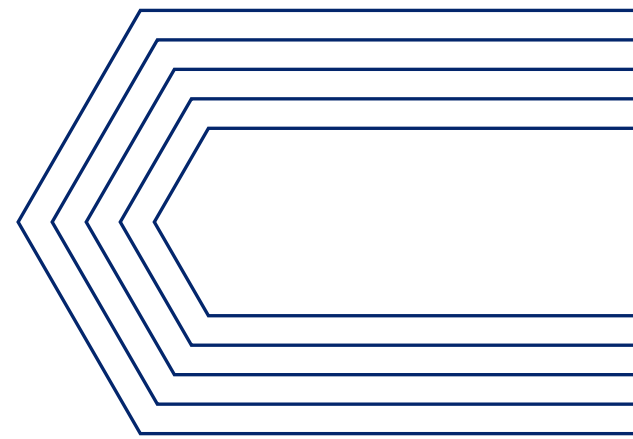


Elevated functional capabilities with curated Analytics & Data management Solutions for an Alcoholic Beverage Leader



Client Overview

The client, a global leader in spirits and wines, is headquartered in France. With a presence in over 160 geographical locations worldwide and 240 premium brands available, it boasts a global footprint and a storied history of producing premium alcoholic beverages. Renowned for quality, innovation, and sustainability contributing to industry growth and success.

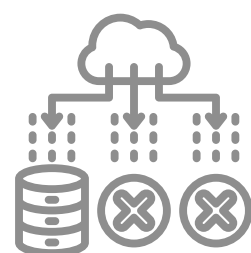
Problem Statement

The client was facing challenges integrating all the varied data sources and giving a 360-degree view to the Sales, Supply Chain, Operations, Risk and Commercial Stakeholders. Also, the data volumes grew exponentially, their data warehouse encountered performance and scalability limitations.

Key Challenges



Exponential data growth has resulted in performance challenges and issues like data discrepancies and duplicates



Disconnected and silos data leading to difficulties in decision making

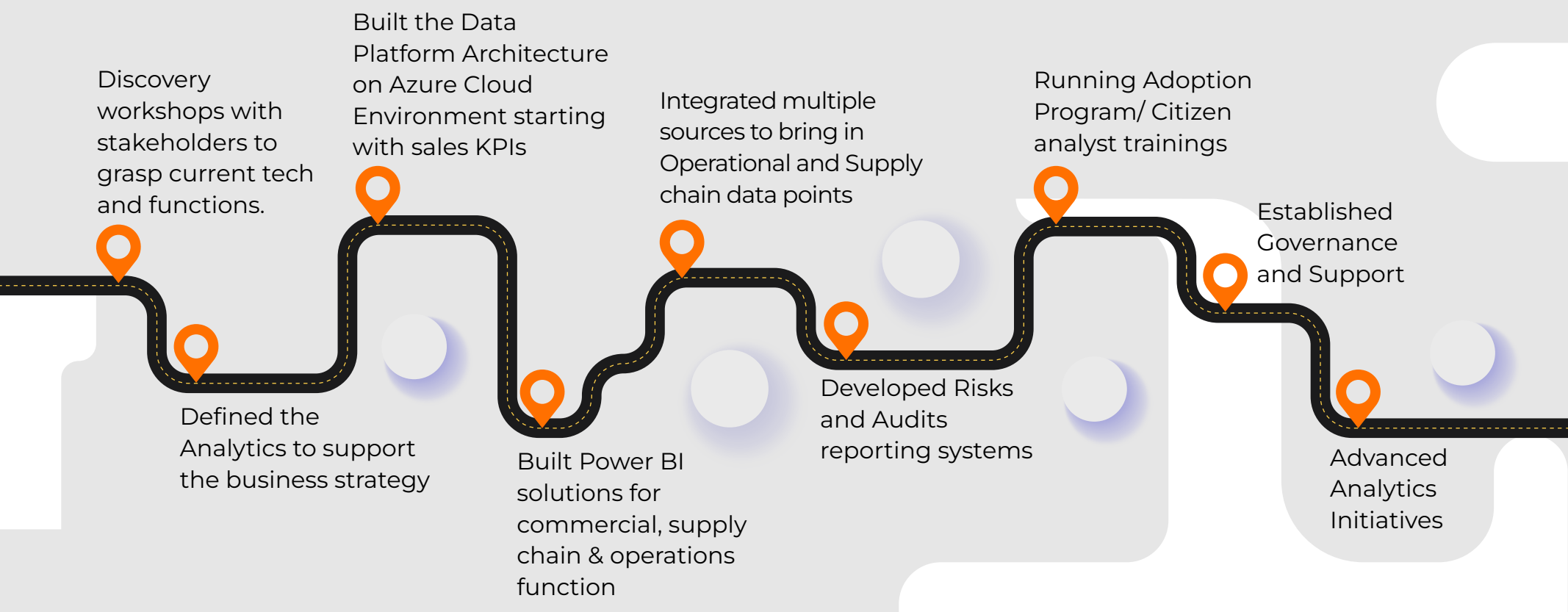


A complex architecture raised maintenance costs, while low user adoption and business buy-ins persisted

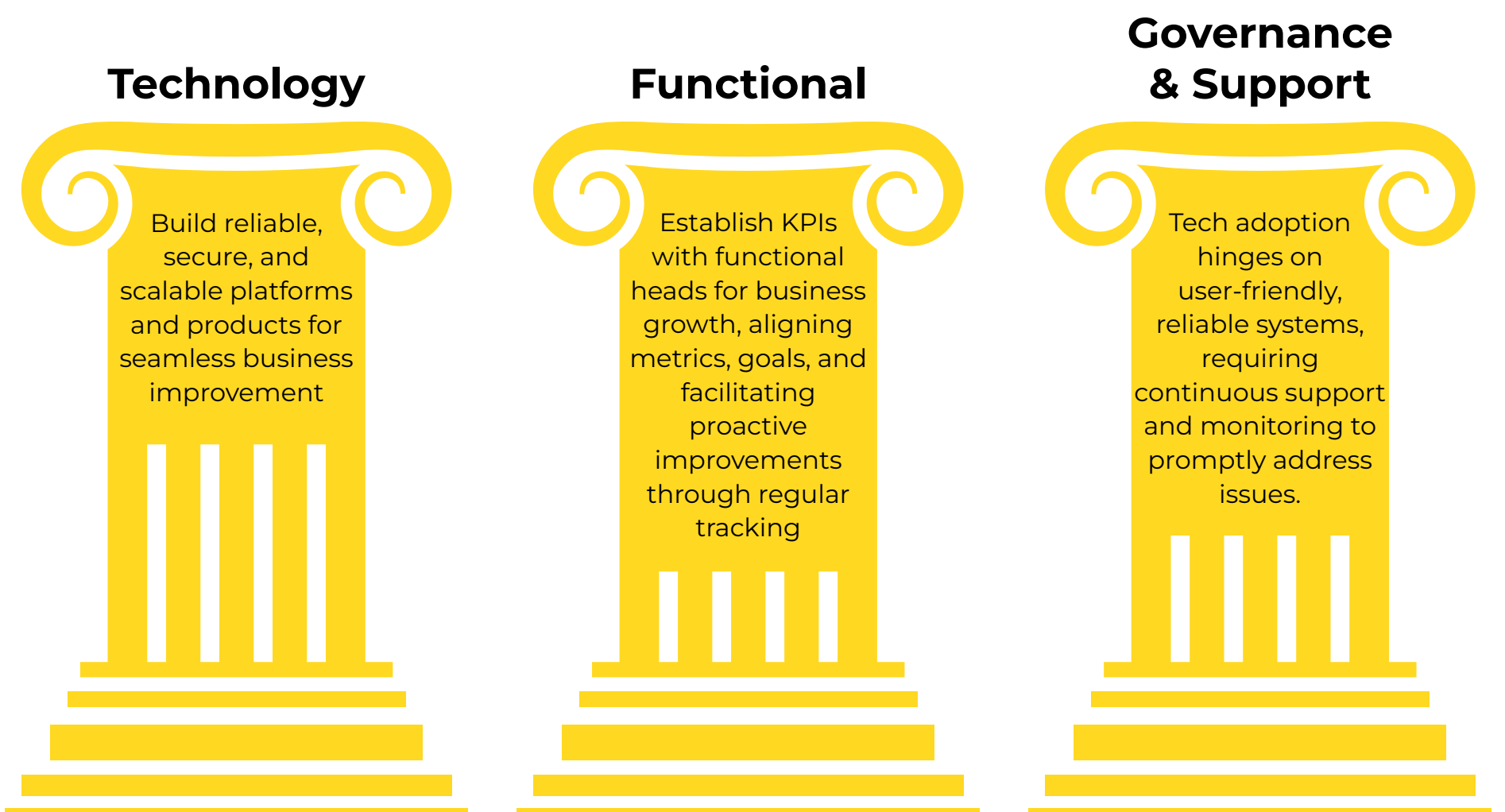


Limited user familiarity with the visualization platform hindered full utilization of its features and capabilities

Roadmap for End-to-End Project Deliverables



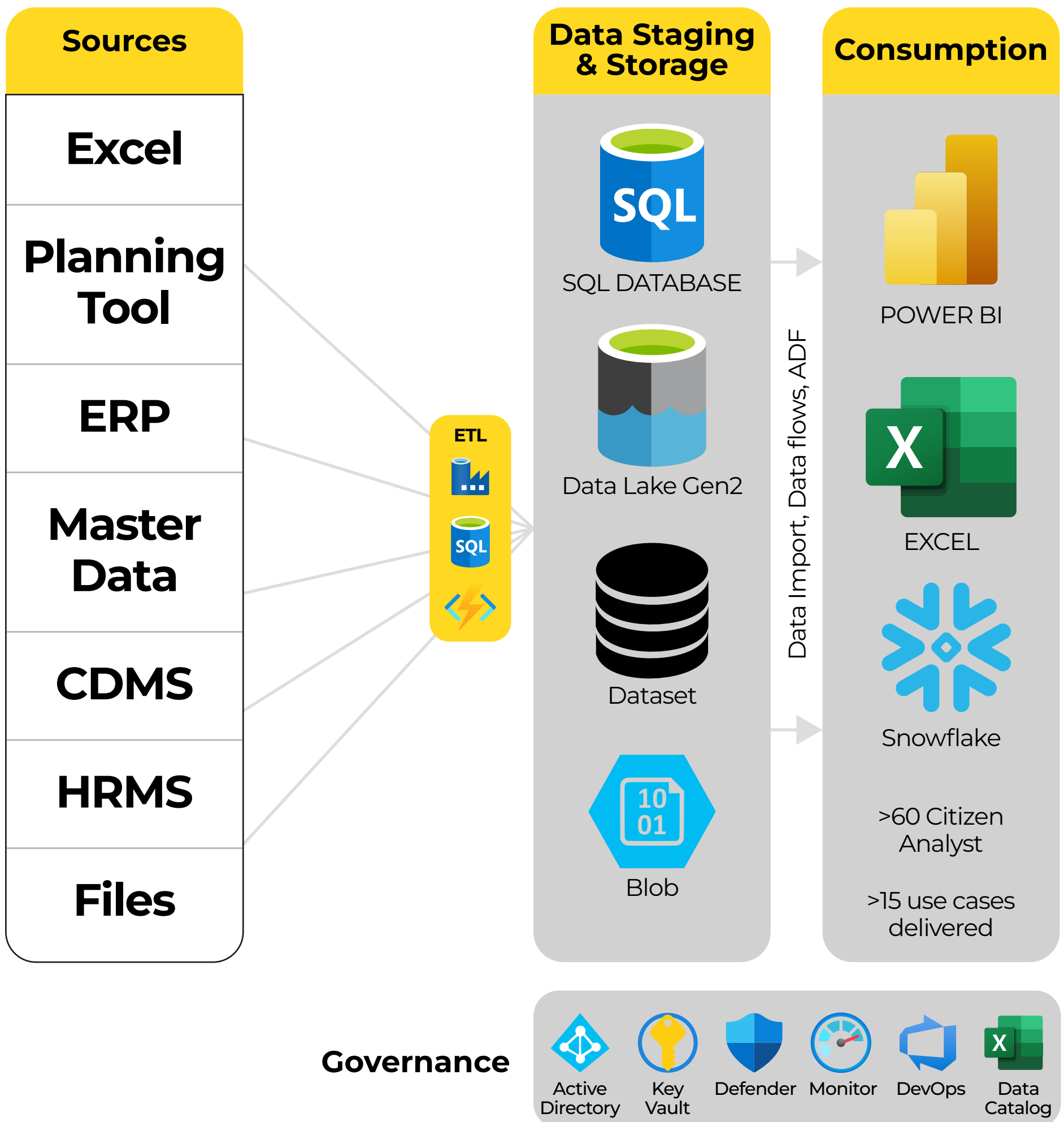
3 Key Pillars for Architectural Change



Client's Data Platform - Architecture

Technology Stack

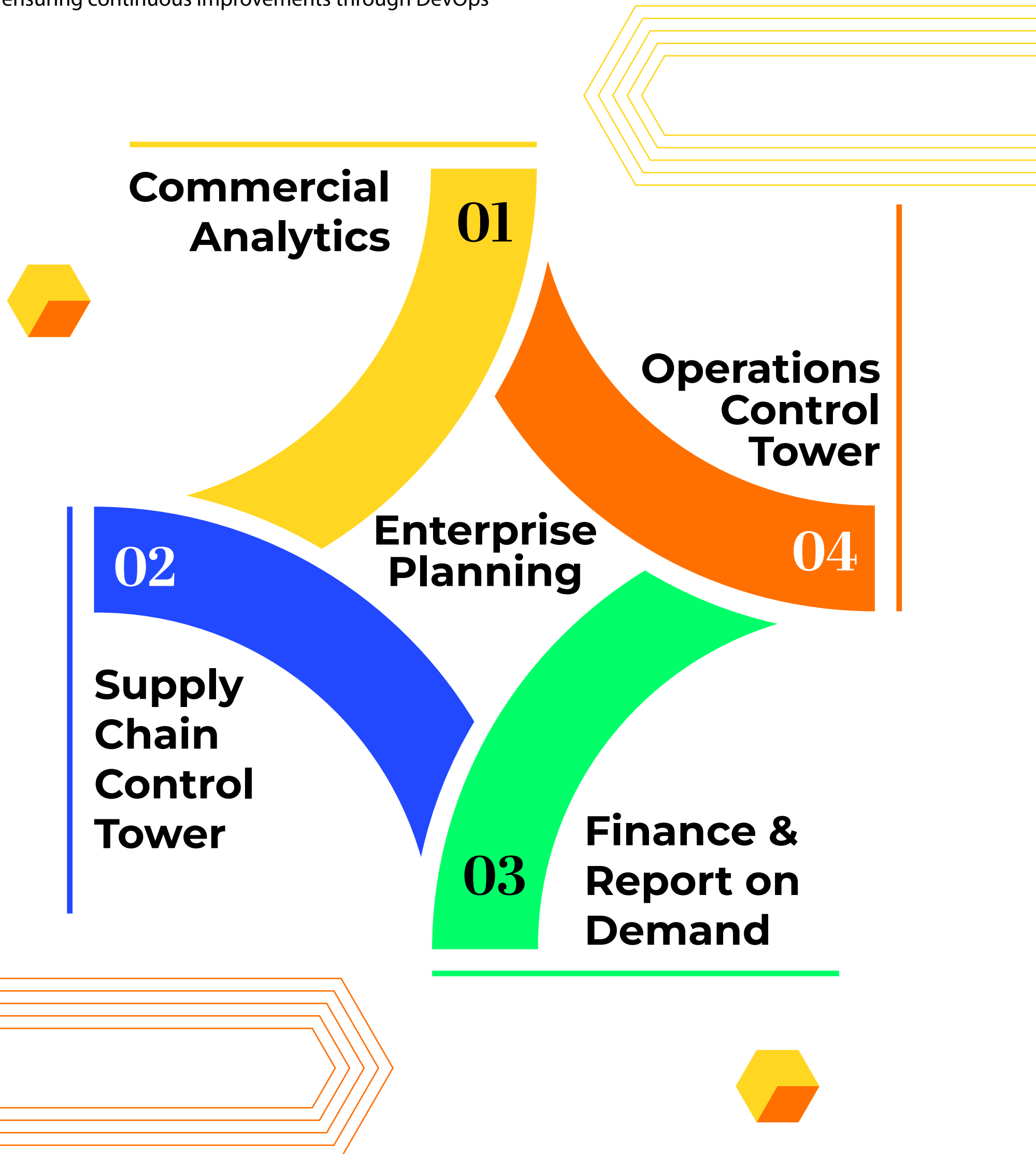
Microsoft Azure, PowerBI, Snowflake, SQL



In partnership with Microsoft, Snowflake, Anaplan, and others, our experts turned complex data setups into a high-value, fast, and intuitive decision support engine, delivering our best capabilities.

Functional components of projects for Enterprise Level Data Management and Analytics

With a detailed assessment, we understood their data and their bottlenecks at a granular level to provide strong data architectures where we built a robust data platform on Microsoft Azure, migrated reports from Qlik/OBIEE to Microsoft Power BI across Sales, Supply Chain, Operations, Risk & Commercial ensuring continuous improvements through DevOps




Solution: Functional Projects for Enterprise Level Data Management and Analytics

01 Commercial Analytics

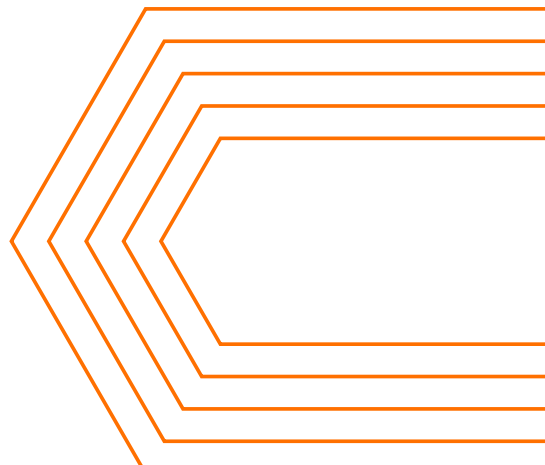


<p>Executive Dashboard</p> <p>Tracked Market Shares and other Commercial KPIs</p>	<p>Key Customer Analysis</p> <p>Achieved cost benefits and key account by optimizing the investment</p>	<p>Market Analysis</p> <p>Optimized the Market Share of internal brands by comparing industry data</p>	<p>Allowance & Discount</p> <p>Built Analytical Platform to evaluate A&D spends across brand categories & markets</p>	<p>Campaigns & Promotion</p> <p>Analytical platform for trade marketing spends to assess campaign effectiveness</p>	<p>Pricing Analytics</p> <p>Price simulator to assess the impact of price change on sales, market share and margin across different markets</p>
------------------------------------------------------------------------------------------	----------------------------------------------------------------------------------------------------------------	---------------------------------------------------------------------------------------------------------------	------------------------------------------------------------------------------------------------------------------------------------------	--------------------------------------------------------------------------------------------------------------------------------	--------------------------------------------------------------------------------------------------------------------------------------------------------

02 Operations Control Tower



<p>Quality</p> <p>Tracked quality measures across, warehouse manufacturing, blending for auditing, complaints management, and refining quality management processes</p>	<p>Environment Health & Safety</p> <p>Minimized the accident rate and tracked the safety assessment ensuring compliance with organizational norms.</p>	<p>Cash Savings</p> <p>Tracked cost-saving measures across all activities</p>	<p>Delivery</p> <p>Checked on order fulfilment and traced the freight cost, truck utilization, breakages, and detention</p>	<p>Cost & Efficiency</p> <p>Optimised costs across various departments like labour, raw goods, and other indirect costs</p>
--------------------------------------------------------------------------------------------------------------------------------------------------------------------------------	-------------------------------------------------------------------------------------------------------------------------------------------------------------------	--------------------------------------------------------------------------------------	------------------------------------------------------------------------------------------------------------------------------------	----------------------------------------------------------------------------------------------------------------------------------------





Solution: Functional Projects For Enterprise Level Data Management And Analytics

03

Supply Chain Control Towers



Demand Planning Centre

Tracked Market Shares and other Commercial KPIs

Supply Planning Centre

Achieved cost benefits and key account by optimizing the investment

Inventory Tower

Optimized the Market Share of internal brands by comparing industry data

Warehouse Tower

Built Analytical Platform to evaluate A&D spends across brand categories & markets



Logistic Tower

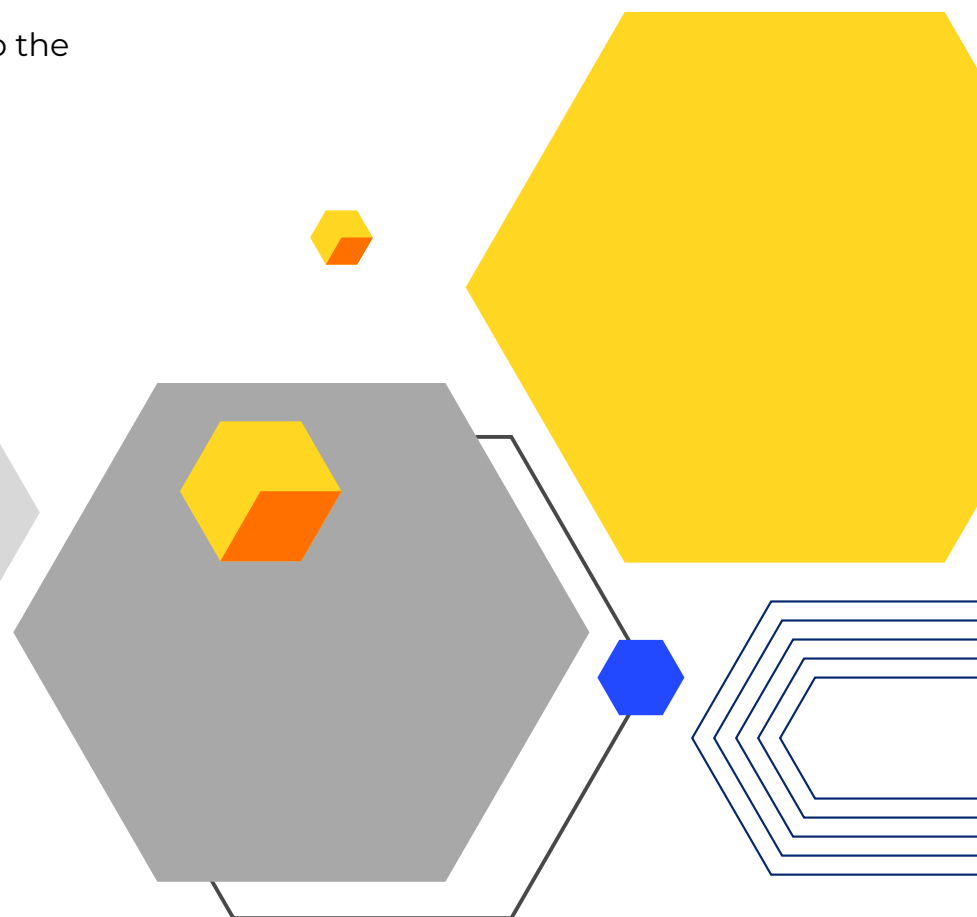
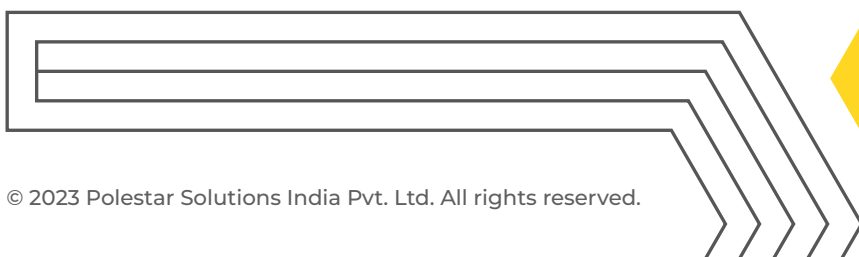
Traced the freight cost, truck utilization, breakages, and detention

Material Management Tower

Checked the availability of material to execute production plan

Fulfillment Tower

Reported customer demand fulfilment to the leadership





Solution: Functional Projects For Enterprise Level Data Management And Analytics

04 Finance & Report on Demand

Shipment Audit (V/s Production)

Audit the shipments exceeding production against each batch

Wastage Audit

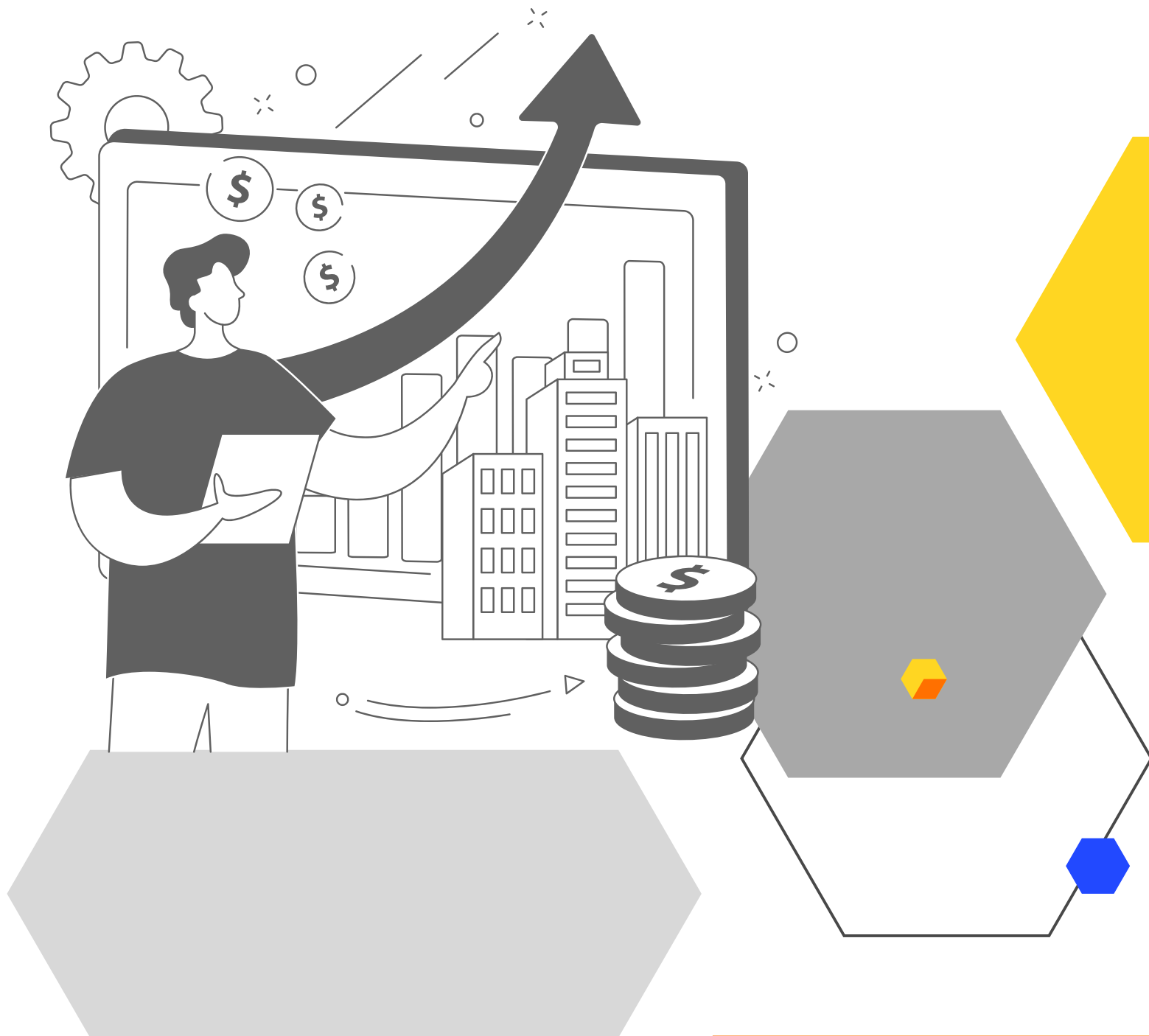
Monitored the inconsistency in material consumptions booked in billing of material & actual work orders

Work Order Taudit

Tracked the work order closures and reopening of orders

Adhoc Files

Digitalizing the manual reporting to leadership





Governance & Support

The client received comprehensive governance and support, which included the following technical facets:

Monitoring



1

Established Pipeline & Platform monitoring to proactively track system performance and identify potential issues with **Azure Monitor**

Access Control



2

Enforcing and managing Keys, Certificates & Passwords to regulate system access through **Key Vault**

DevOps



3

Integrating and optimizing development and operational processes through **Azure DevOps** to ensure a automated stable environment

Security



4

Protect workload across multi cloud and strengthen security posture through **Microsoft Defender Antivirus**

Ticket Management



5

Managed incidents and service requests through self-enablement and adhering to AMS governance by Ticket Management Software

Training



6

Offered product training and self-enablement sessions to empower stakeholders with essential skills for effective system use

Oracle to Azure
Data Estate
Migration

Single Source
of Truth

Project Wins

Developed the
entire set of
reports from Qlik
and OBIEE in
Power BI

Role-based dashboard
access, robust data
design, ongoing
DevOps platform
improvement

Business Impact

97%

reduction
in reports
TAT

12+

analytics
application
delivered

50+

data analysts
trained on
Power BI

200+

entities integrated
end-to-end with
Azure and more