

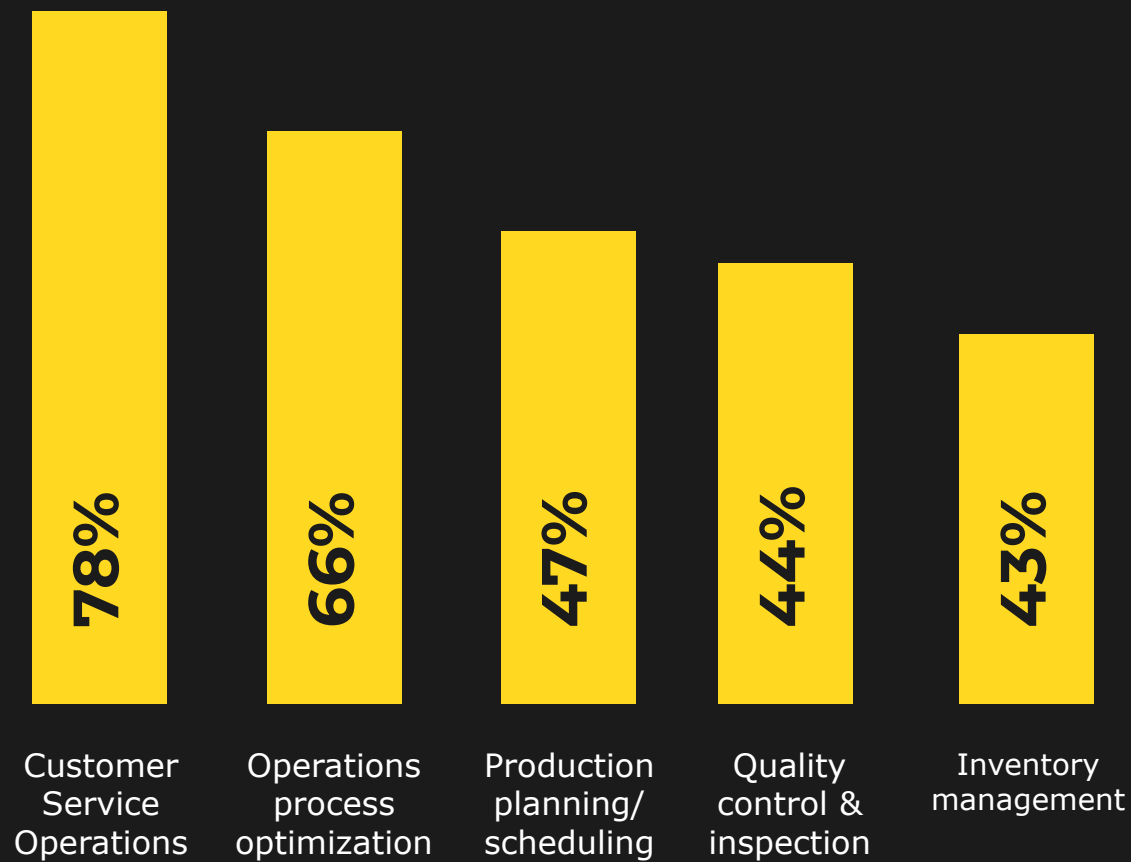
Key Barrier of Generative AI Implementation

Generative AI, a deep learning breakthrough, excels in managing diverse data and multitasking, enhancing abilities in areas like:

- ▶ **Data Handling**
- ▶ **Image Analysis**
- ▶ **Code Creation**

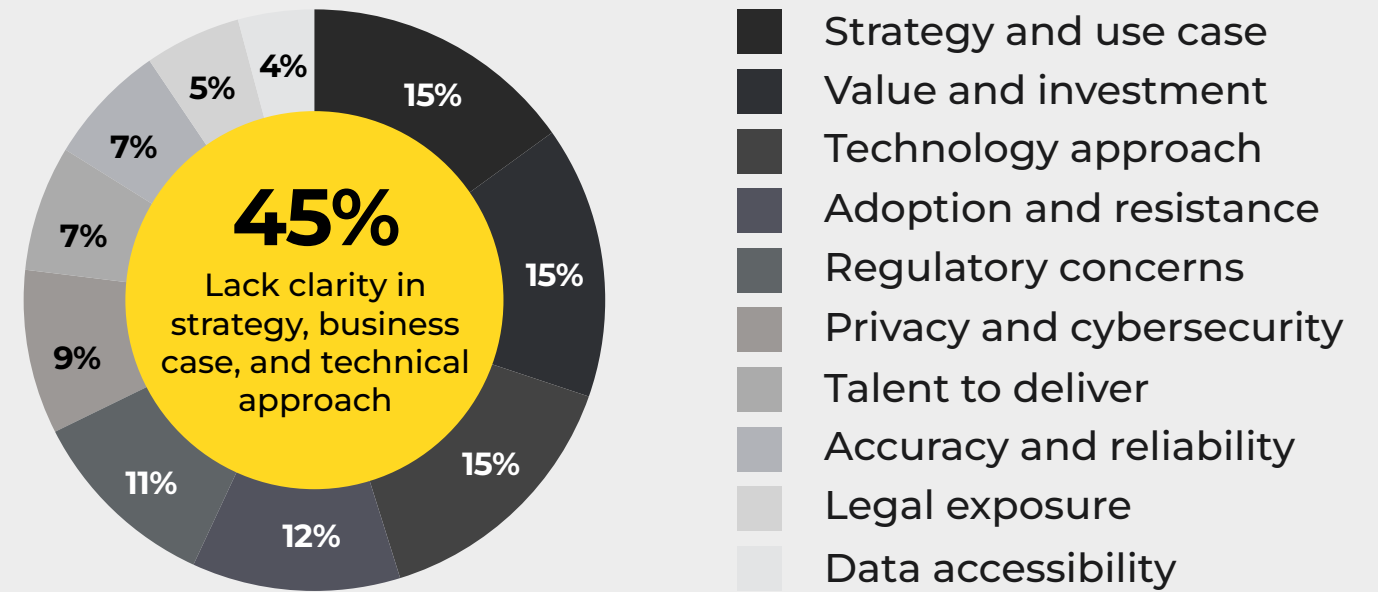
In the supply chain, these capabilities translate to improved data management, streamlined operations, and enhanced decision support.

Executives' priority areas for applying generative AI in supply chain & operations.



Source: KPMG

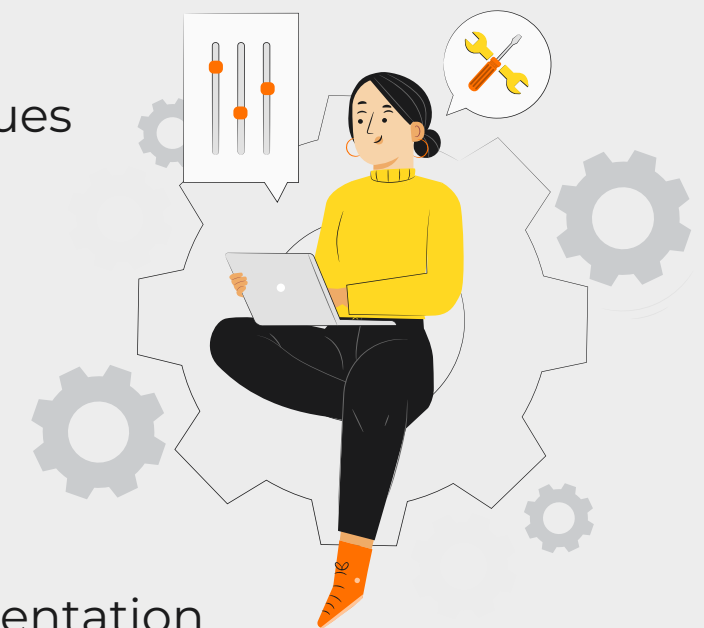
But leaders encounter obstacles when trying to implement it.



Source: KPMG

Implementation Challenges for GenAI

- ★ Inadequate Training & Expertise
- ★ Data Privacy & Security issues
- ★ Scalability Challenges
- ★ Change Management
- ★ Complex Robotic Process Automation (RPA) implementation



But large majority see more benefits than challenges

“ 68% ”

of executives view benefits of Generative AI outweigh its risk

Source: Gartner

Significant Quantitative Aspects in the Supply Chain

- 38% Improved decision making
- 49% Remove hidden risks
- 57% Single source of truth
- 41% Improve decision-making
- 38% Streamline operational processes

Source: Gartner

Use Cases



used generative AI to enhance demand forecasting accuracy by analysing historical data, weather, and market trends, optimizing inventory levels and cutting costs



uses GenAI to streamline supply chain operations ed specialized software that automatically converts and adjusts programming languages and data formats across supply chain stakeholders.

Implications for Supply Chain Leaders

Value



Improves productivity of employees

Scalability



Spans employees, robotics, and network partners

Adoption



Relies on dependability of results- AI hallucination

Function



Understands and creates content

Approach



Pre-trains predominantly on TBs of unstructured data

Delivery



Requires model tuning and application integration

95%

of global executives agree on advances in generative AI signifies a new era of enterprise intelligence



Generative AI will have a profound impact, supporting people right across the supply chain:

Advisory

AI empowers personalized intelligence to enhance various supply chain tasks from vendor suggestions to asset maintenance guidance.

Supply chain roles potentially impacted: Category managers, supply chain planners, field engineers, plant workers.

Creation

With creative ally, it sparkle innovation in supply chain areas like sustainable packaging and personalized products at the Point of Sale.

Supply chain roles potentially impacted: Product engineers, retailers, materials planners.

Automation

Revolutionizes business automation with GenAI, enabling hyper-efficient, personalized supply chain services through advanced chatbots.

Supply chain roles potentially impacted: Call-center staff, planners, buyers.

Protection

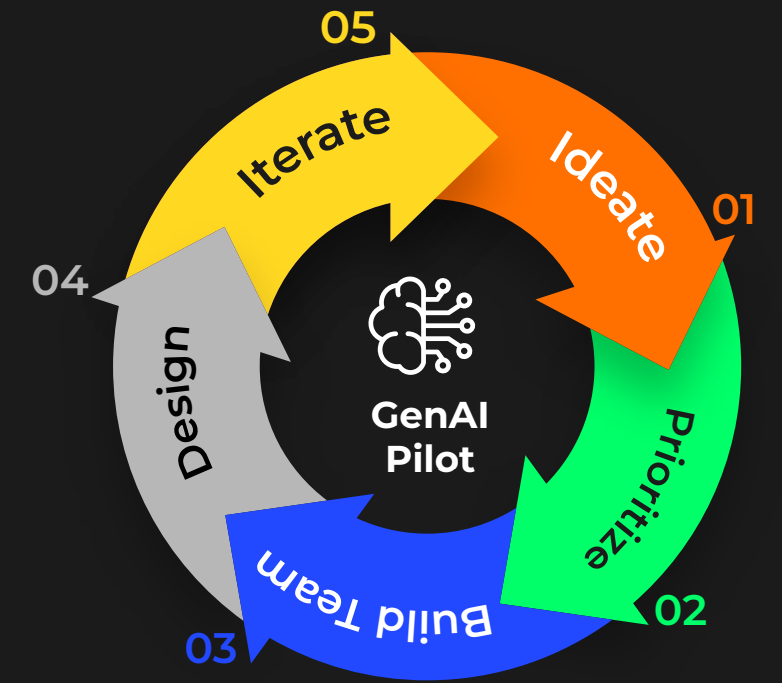
It also enhances governance, security, and risk detection in critical supply chain roles.

Supply chain roles potentially impacted: Sustainability and compliance officers, risk managers

Six Essentials of Adopting GenAI

- 01 Dive in with a business-driven mindset
- 02 Adopt people-first approach
- 03 Get your proprietary data ready
- 04 Invest in sustainable tech foundation
- 05 Accelerate your ecosystem innovation
- 06 Level up your Responsible AI

GenAI Pilot Cycle



Source: Gartner

Emerging Use Case Patterns Reshaping Supply Chain Dynamics

Network Service Collaboration

High volume collaboration to ensure inbound supplier risks are mitigated & outbound customer expectations are met

Operational excellence & improvement

GenAI helps scale a capability around a COE that contributes to supply chain functions, processes, and sites with consistent improvement

Network Service Collaboration

GenAI helps scale the ability of multiple teams to physically evaluate each product at every location through evaluation agent

For Detailed Version - [Access our Ebook](#)